

PHOTOGRAPHY IN A NUTSHELL

The Big 3: ISO, Aperture, Shutter Speed

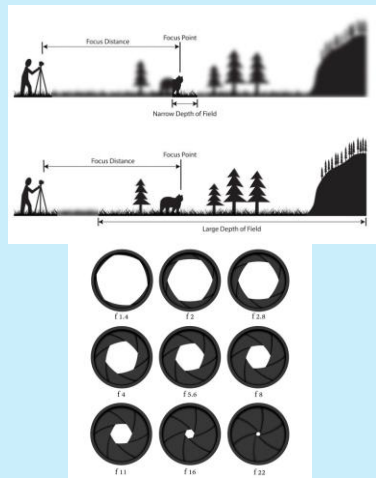
ISO:

- Refers to camera's sensitivity to light
 - Higher ISO – means photo is brighter
 - Lower ISO – means photo is darker[Higher ISO is used in places with less light, and vice versa]
- Negative impact of ISO: Noisy/Grainy Photo.



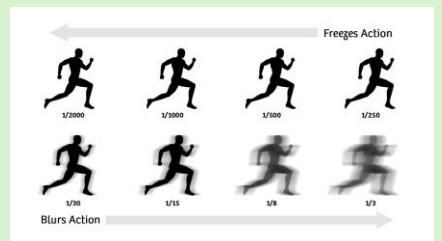
Aperture:

- Controls the amount of light entering the camera; calibrated in F-stops (f/x)
- Higher F-stops = smaller aperture and vice versa
- Higher F-stop increases the depth of field but decreases exposure. Objects further away will be in focus, but image will be darker
- Lower F-stop decreases depth of field but increases exposure. Use this for background blur. Photos will be brighter.



Shutter Speed:

- Controls the duration in which light is allowed to reach the sensor in the camera
- Faster shutter speed
 - Freeze your subject in place, making it clearer
 - Makes picture darker as there is lesser time for light to reach the camera
 - Use this for fast moving objects (e.g., Sports)
- Slower shutter speed:
 - Subject becomes blurry (if moving).
 - Motion blur is created
 - Makes picture brighter as there is more time for light to reach the camera
 - Use this for slow moving / stationary objects.



Drive Modes

1. Single Shooting: takes one shot each time the shutter button is pressed
2. High speed continuous shooting captures images continuously at a ~~slow~~ *fast* rate while the shutter button is held down.
 - Example: sports
3. Low speed continuous shooting captures image continuously at a slower rate while the shutter button is held down.
4. Self timer (10sec/2sec): delays the shutter for the respective amount of time.
5. Silent single shooting takes one shot with reduces shutter noise for discreet photography.
6. Silent continuous shooting captures images continuously with reduces shutter noise for less intrusive shooting.
7. HDR mode (on R7 only): combines multiple exposures into 1 image to capture a wider dynamic range.

White Balance

Adjusts colors in the photo to match the color of the light source so that the **white object appears white**.

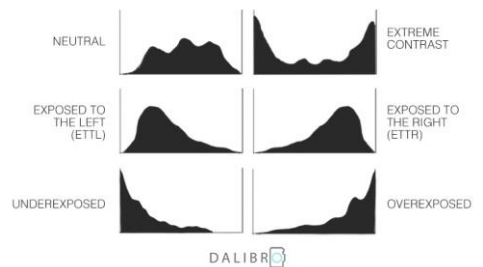
Presets:

- AWB (auto white balance; used most of the time)
- Fluorescent
- Shade
- Cloudy
- Daylight
- Tungsten
- Flash (barely used)

AF (Auto-Focus) Modes

1. ONESHOT: Camera locks focus on subject while the shutter button is pressed halfway and maintains that focus until the picture is taken. Once focus is achieved, it remains fixed until the photo is captured.
 - Use this for stationary subjects
2. AI Focus: hybrid autofocus mode that automatically switches between One-shot and AI servo depending on movement of the subject. If the subject is still, camera behaves like One-shot mode, locking focus once achieved. If the subject starts moving, camera switches to AI servo to continuously track and adjust focus.
 - Use this for subjects with unpredictable movement.
3. AI Servo: designed for continuous autofocus tracking of moving subjects. Camera continually adjusts focus if the shutter button is pressed halfway, allowing for sharp and in focus images of subjects in motion.
 - Use this for tracking and capturing moving objects.

Histogram



Camera menu:

*Those that's bolded are more important

